



272 DS
U02720001



Imported by:
Stanley Black & Decker Italia S.r.l.
Via Volta, 3 - 21020 Monvalle (VA)
Tel. +39 0332 790111 - Fax +39 0332 790330
info.mv@usag.it

usag.it
usag-tools.net

Ed-1 - 02/2020 - U63000467Y



Manuale d'istruzioni
Original instructions



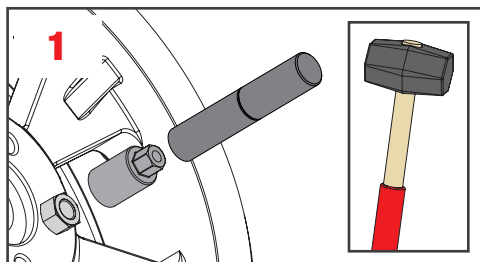
Viti o dadi con anello girevole

Wheel locks with spin collar

1

Scegliere una bussola conica corretta (B) in base al diametro della testa della vite o dado antifurto e bloccarla utilizzando l'impugnatura speciale (C) e un martello.

Choose the right conical socket (B), checking the diameter of the wheel lock head, and lock it using the impact extractor holder (C).



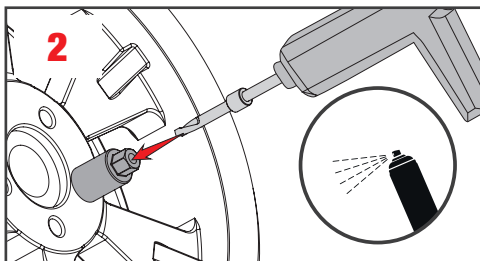
2

Forare la testa della vite o dado antifurto con la punta speciale al tungsteno (A), utilizzando la bussola conica (B) come centratore:

- Non usare un trapano con percussione.
- Non superare 750 giri/min per salvaguardare la punta.
- Refrigerare con olio da taglio.

Drill the wheel lock head using the tungsten drill bit (A), keeping the conical socket (B) as a centering guide:

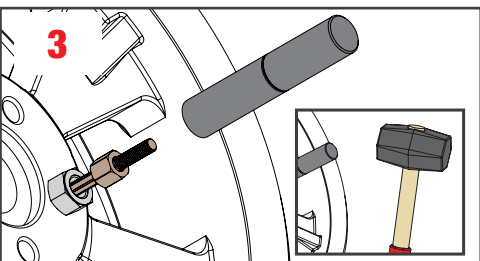
- Don't use an impact drill.
- Don't exceed 750 rpm.
- Refrigerate using cutting fluid.



3

Inserire l'estrattore esagonale (D) utilizzando l'impugnatura speciale (C). L'estrattore resiste ad una torsione fino a 150 Nm.

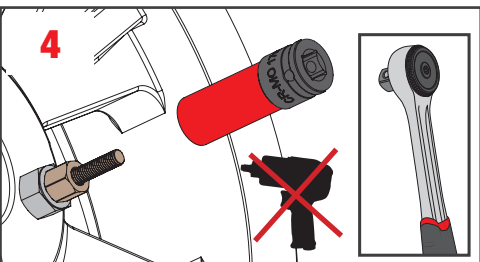
Mount the extractor (D) using the impact extractor holder (C). Hexagonal extractor has been tested to resist a torsional strength of 150 Nm.



4

Estrarre la vite o il dado antifurto con la bussola macchina (F) per cerchi con protezione in teflon (solo utensili manuali).

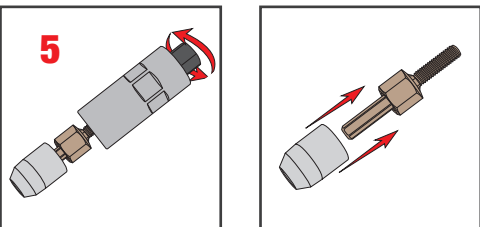
Extract the wheel lock using the impact socket (F) with Teflon sleeve (use hand tools only).



5

Rimuovere l'estrattore esagonale (D) utilizzando l'apposito estrattore a bussola (E).

Remove the extractor (D) using the impact extractor remover (E).



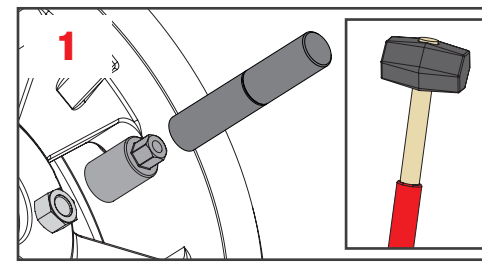
Viti o dadi senza anello girevole

Wheel locks without spin collar

1

Scegliere una bussola conica corretta (B) in base al diametro della testa della vite o dado antifurto e bloccarla utilizzando l'impugnatura speciale (C) e un martello.

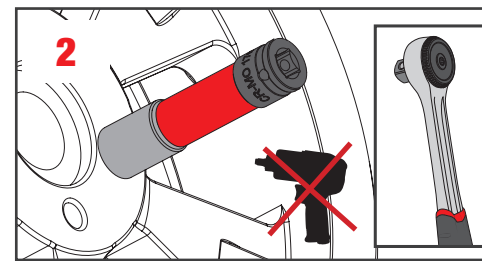
Choose the right conical socket (B), checking the diameter of the wheel lock head, and lock it using the impact extractor holder (C).



2

Inserire l'estrattore esagonale (D) utilizzando l'impugnatura speciale (C). L'estrattore resiste ad una torsione fino a 150 Nm.

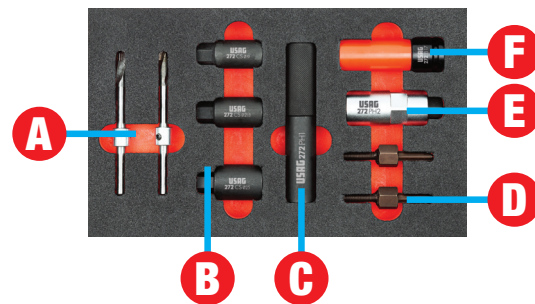
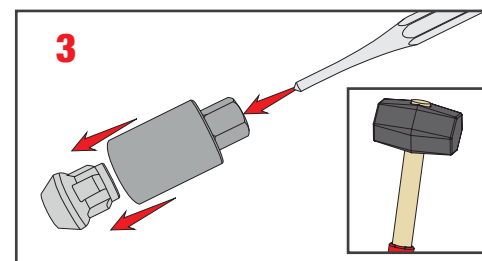
Mount the extractor (D) using the impact extractor holder (C). Hexagonal extractor has been tested to resist a torsional strength of 150 Nm.



3

Estrarre vite o dado antifurto dalla bussola conica (B) utilizzando un cacciaspine.

Extract the wheel lock from conical socket (B) using a pin punch.



VIDEO TUTORIAL
ITALIANO



YouTube

VIDEO TUTORIAL
ENGLISH



YouTube